

TDSG

THREE SUPPORTING ROLLER BELT CONVEYOR

TDSG three-roller belt conveyor is traditional belt conveyor, utilized for conveying of granular and powdery materials horizontally or inclined.

Main structure

Tail section, middle section, head c/w driving unit, tensioning device, etc.

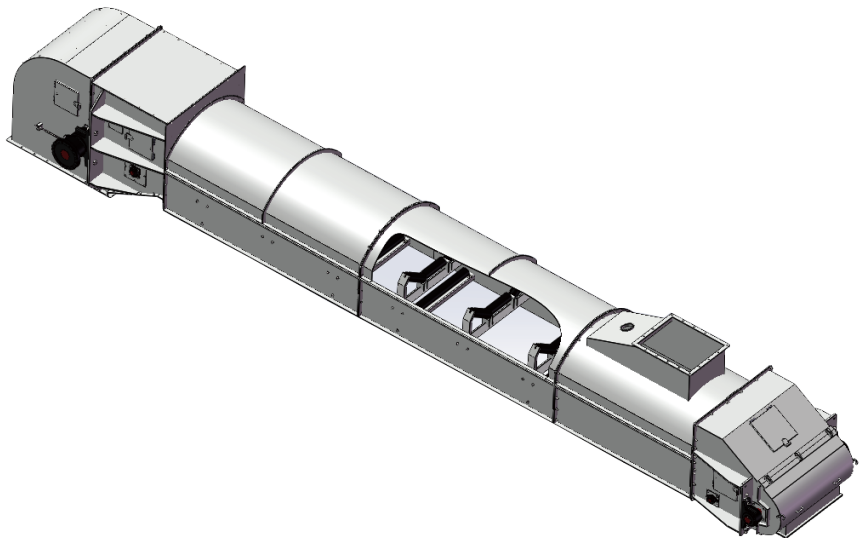
Features

1. Simple structure; stable operation; long conveying distance.

2. Speed protection, alignment, emergency stop device, etc. to ensure stable operation and protect equipment.

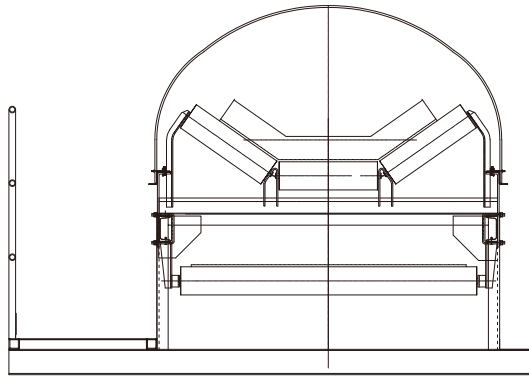
3. Equipped with tail, middle section gravity tension etc. per actual design.

4. Top cover can be fast release or fixed.



info@g-grain.com

More details please visit www.g-grain.com and download



Model	Belt width (mm)	Roller qty of each row (pcs)	Belt speed (m/s)	Capacity (t/h)
TD SG-50	500	3	1.6~2	80~100
TD SG-65	650	3	1.6~2.5	150~230
TD SG-80	800	3	1.6~3.15	200~400
TD SG-100	1000	3	2~3.15	500~800
TD SG-120	1200	3	2~3.15	800~1200
TD SG-140	1400	3	2~3.15	1000~1600
TD SG-160	1600	3	2~3.15	1200~1800

Capacity is calculated based on bulk density 0.75t/m³