

# SZC

## LOSS-IN-WEIGHT SCALE

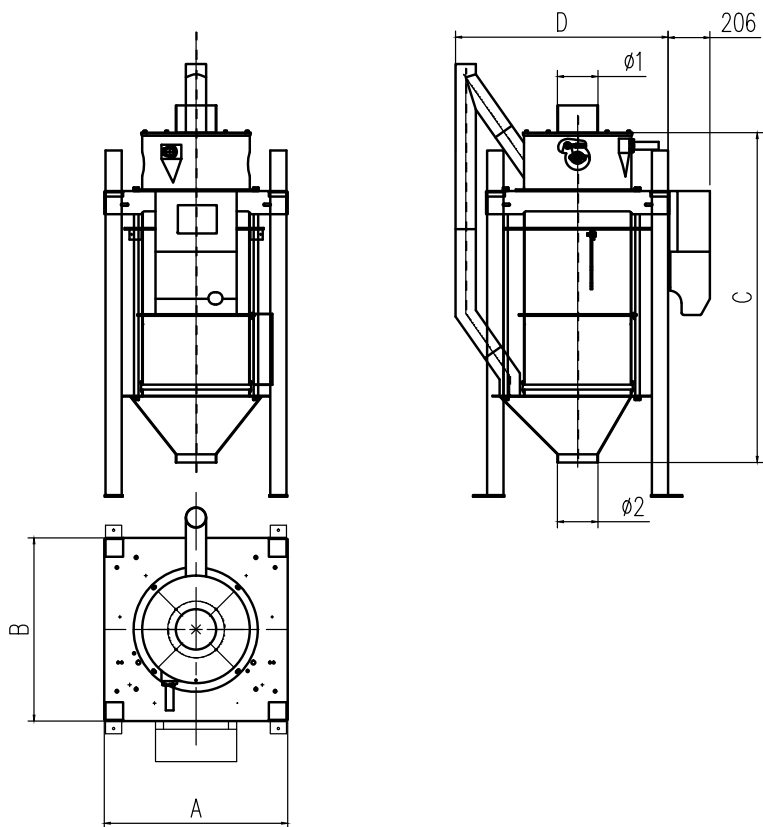
This LOSS-IN-WEIGHT SCALE is feeding composed of a rack, feeding mechanism, weighing hopper, continuous discharging device, servo motor, load cells and control system. It is designed for precise flow metering and continuous feeding of granular materials such as wheat, corn, soybeans, plastic particles and pelleted feeds.

The system supports continuous weighing and flexible flow adjustment to meet various quantitative requirements. Featuring a compact structure with a specialized arc feeding gate and servo control, it offers low installation height, high capacity, and easy operation and maintenance. The weighing instrument provides rich data display and supports Profibus communication for real-time monitoring and reporting.



[info@g-grain.com](mailto:info@g-grain.com)

More details please visit [www.g-grain.com](http://www.g-grain.com) and download



Model	A (mm)	B (mm)	C (mm)	D (mm)	Φ1 (mm)	Φ2 (mm)
SZC-50	804	804	1182	944	150	150
SZC-100	804	804	1799	944	200	150
SZC-150	904	904	1627	1024	250	200
SZC-200	904	904	2244	1024	250	200
SZC-250	904	904	2861	1024	300	250

Model	Density (kg/L)	Volume (L)	Capacity (t/h)	Accuracy (%)	Pressure (MPa)	Air Consumption (L/h)	Scale
SZC-50	0.75	50	8-12	±0.5	0.5-0.6	1200	Hopper
SZC-100	0.75	100	12-20	±0.5	0.5-0.6	1200	Hopper
SZC-150	0.75	150	20-40	±0.5	0.5-0.6	1200	Hopper
SZC-200	0.75	200	40-60	±0.5	0.5-0.6	1200	Hopper
SZC-250	0.75	250	60-80	±0.5	0.5-0.6	1200	Hopper

Note: Capacity is tested with wheat; for other materials, capacity should be determined based on the material.