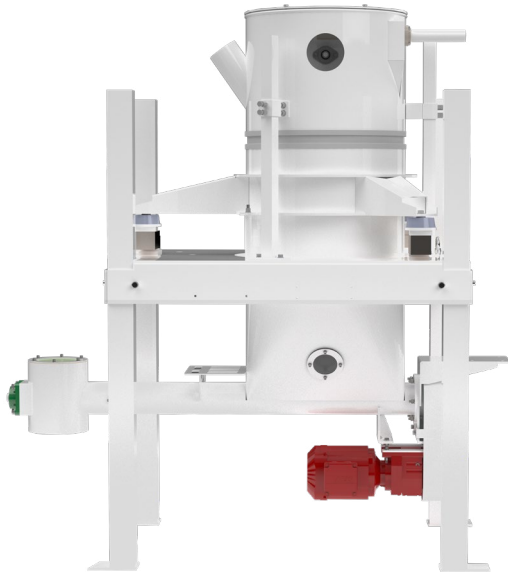


# JLCJ

## LOSS-IN-WEIGHT SCALE

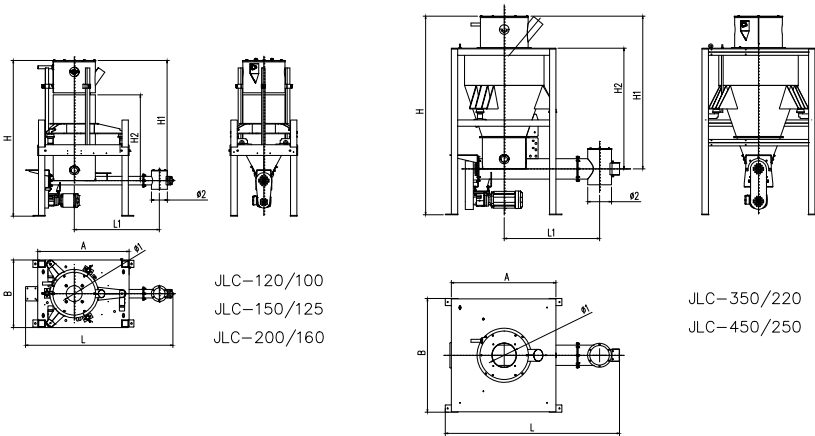
This LOSS-IN-WEIGHT SCALE is composed of a rack, feeding mechanism, weighing hopper, discharging screw, gear motor, load cell, and control system. It is designed for the continuous discharge of floury materials without arching and is especially suitable for materials with poor flow ability, such as those used in continuous mixing and blending systems or dough mixers.

The system offers continuous weighing and flexible flow adjustment, with adjustable flow rates to meet various working conditions. Featuring a compact structure, low installation height, high capacity, and easy operation and maintenance, it also includes a comprehensive operational data display, Profibus module, and real-time weighing data and reporting.



[info@g-grain.com](mailto:info@g-grain.com)

More details please visit [www.g-grain.com](http://www.g-grain.com) and download



Model	A (mm)	B (mm)	L (mm)	L1 (mm)	H (mm)	H1 (mm)	H2 (mm)	Φ1 (mm)	Φ2 (mm)
JLCJ-120/100	1150	850	2045	1070	1960	1572	1140	250	200
JLCJ-150/125	1150	850	2150	1070	2065	1677	1245	250	200
JLCJ-200/160	1150	850	2283	1270	2240	1743	1311	250	200
JLCJ-350/200	1316	1420	2100	1200	2380	1802	1398	300	250
JLCJ-450/250	1316	1420	2130	1200	2500	1922	1518	300	300

Model	Density (t/m <sup>3</sup> )	Volume (L)	Screw Diameter (mm)	Capacity (t/h)	Accuracy (%)	Power (kW)	Pressure (MPa)	Air Consumption (NL/h)
JLCJ-120/100	flour(0.5)	120	Φ100	0.1-3	±0.5	1.5	0.5-0.6	600
JLCJ-150/125	flour(0.5)	150	Φ125	0.15-5	±0.5	1.5	0.5-0.6	600
JLCJ-200/160	flour(0.5)	200	Φ160	0.5-15	±0.5	2.2	0.5-0.6	600
JLCJ-350/200	flour(0.5)	350	Φ200	1-25	±0.5	3	0.5-0.6	1200
JLCJ-450/250	flour(0.5)	450	Φ250	3-45	±0.5	4	0.5-0.6	1200