

FGF

PNEUMATIC AIRLOCK

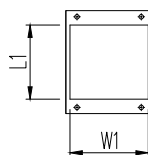
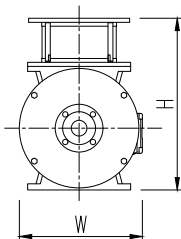
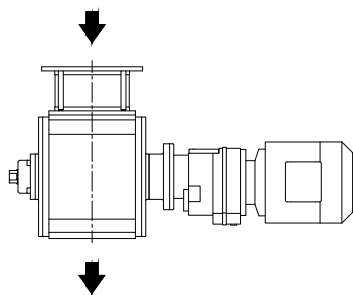
Airlocks are normally installed below the cyclones or jet filters. They are made of special cast iron material to ensure perfect tightness. They are designed for discharging mill stock, filter dust in the food processing industry, and feeding materials such as grain, break stock, semolina, flour or other similar material from pneumatic conveying lines.



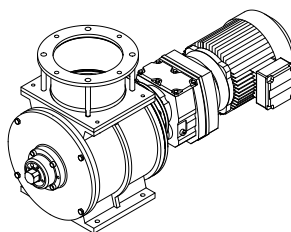
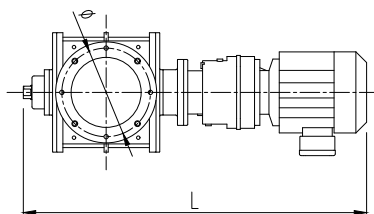
GOLDEN GRAIN

info@g-grain.com

More details please visit www.g-grain.com and download



OUTLET



Model	Volume (m ³)	Shaft speed (rpm)	Single motor		Motor KW couple drive			
			RPM (r/min)	Power (kw)	RPM (r/min)	2 Airlock (kw)	3 Airlock (kw)	4 Airlock (kw)
FGF-5	0.005	35-55	43	0.55	48	0.75	1.10	1.50
FGF-7	0.007	35-55	43	0.55	40	1.10	1.10	1.50
FGF-9	0.009	30-50	43	0.75	40	1.10	1.50	2.20
FGF-12	0.012	30-50	43	0.75	40	1.10	1.50	2.20
FGF-16	0.016	28-45	43	0.75	40	1.10	1.50	2.20