

# DFS

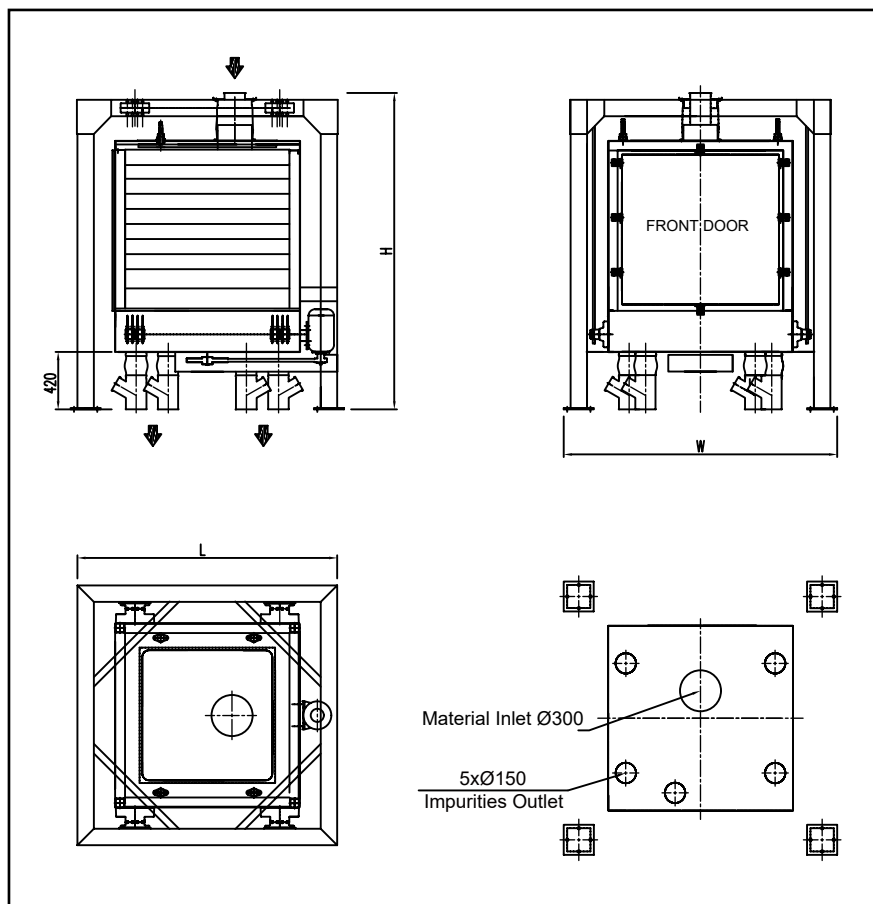
## MONO CHECK SIFTER

This MONO CHECK SIFTER serves as a final security step in the milling process to ensure flour purity before storage or packaging. It removes bran and oversized particles that may compromise product quality. In addition to flour milling, the machine is suitable for use in corn, feed, and rice industries, offering reliable performance across multiple grain processing applications.



*info@g-grain.com*

*More details please visit [www.g-grain.com](http://www.g-grain.com) and download*



Model	Sieve Layers	Sieve Area (m <sup>2</sup> )	Capacity (≤ t/h)	Rotary Diameter (mm)	Power (kW)	Dimensions (L×W×H) (mm)
DFS-740	8-12	3.4-5.1	1-1.8	Φ40-50	1.1	1375×1375×2160
DFS-830	8-12	4.1-6.2	2.5-5.5	Φ45-50	1.1	1526×1526×2310
DFS-1000	10-12	7.8-9.4	4-10	Φ45-55	1.5	1696×1696×2310
DFS-1200	10-12	11.7-14.1	10-15	Φ45-55	1.5	1896×1896×2310

Note: Capacity base on hard wheat flour, Moisture 13~14%, mash 250μm; Capacity needs to be determined based on parameters such as the material, mash size, moisture content, etc.