

DMCP

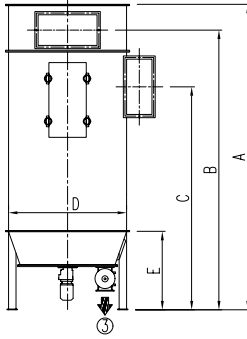
LOW PRESSURE JET FILTER

This LOW PRESSURE JET FILTER is suitable for industrial applications requiring dust separation in low-pressure environments. It effectively removes airborne particles to maintain clean air quality and protect downstream equipment. Designed for reliable performance, it supports continuous operation in grain, flour, and feed milling systems.

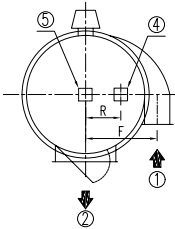


info@g-grain.com

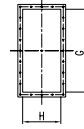
More details please visit www.g-grain.com and download



FLAT BOTTOM TYPE
DMCP



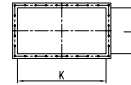
- ① AIR INLET ② AIR OUTLET ③ ASH OUTLET
- ④ ASH OUTLET-FLAT BOTTOM TYPE
- ⑤ ASH OUTLET-CONE BOTTOM TYPE



AIR INLET



ROUND OUTLET



RECTANGULAR OUTLET

Model	Sleeve Length (mm)	Filtration Area (m ²)	Filtration Capacity (m ³ /h)	A (mm)	B (mm)	C (mm)	D (mm)	H×G (mm)	Kl (mm)	Air Consumption (m ³ /min)	Pressure (bar)	Airlocak (kW)	Scraper (kW)
DMCP-26/18	1800	16.9	2034-5085	3378	3093	2504							
DMCP-26/20	2000	18.9	2269-5672	3578	3293	2704	1140	275×500	Φ450	0.26	0.5	0.75	0.75
DMCP-26/24	2400	22.8	2739-6848	3978	3696	3104							
DMCP-39/18	1800	25.4	3051-7627	3443	3158	2449							
DMCP-39/20	2000	28.4	3403-8509	3643	3358	2649	1370	290×640	Φ500	0.39	0.5	0.75	0.75
DMCP-39/24	2400	34.2	4109-10272	4043	3758	3049							
DMCP-52/18	1800	33.9	4068-10169	3443	3158	2399							
DMCP-52/20	2000	37.8	4538-11345	3643	3358	2599	1580	340×740	790×410	0.52	0.5	0.75	1.1
DMCP-52/24	2400	45.7	5478-13696	4043	3758	2999							
DMCP-78/18	1800	50.8	6101-15254	3443	3158	2376							
DMCP-78/20	2000	56.7	6807-17017	3643	3358	2576	1840	485×785	845×460	0.78	0.5	0.75	1.1
DMCP-78/24	2400	68.5	8218-20544	4043	3758	2976							
DMCP-104/18	1800	67.8	8135-20338	3443	3158	2351							
DMCP-104/20	2000	75.6	9076-22689	3643	3358	2551	2020	520×835	1090×460	1.04	0.5	0.75	1.5
DMCP-104/24	2400	91.3	10957-27392	4043	3758	2951							
DMCP-130/18	1800	84.7	10169-25423	3443	3158	2391							
DMCP-130/20	2000	94.5	11345-28362	3643	3358	2591	2350	530×900	1200×470	1.3	0.5	0.75×2	1.5
DMCP-130/24	2400	114.1	13696-34240	4043	3758	2919							
DMCP-156/18	1800	101.7	12203-30507	3528	3243	2369							
DMCP-156/20	2000	113.4	13614-34034	3728	3553	2569	2440	550×970	1200×470	1.56	0.5	0.75×2	1.5
DMCP-156/24	2400	137.0	16435-41088	4128	3843	2969							

Note: The filtration velocity is generally 2-5 m/min. For better dust removal efficiency, it is recommended to select a lower filtration velocity, typically 3-4 m/min. The equipment resistance is 0.5-1.5 kPa.