

SZS

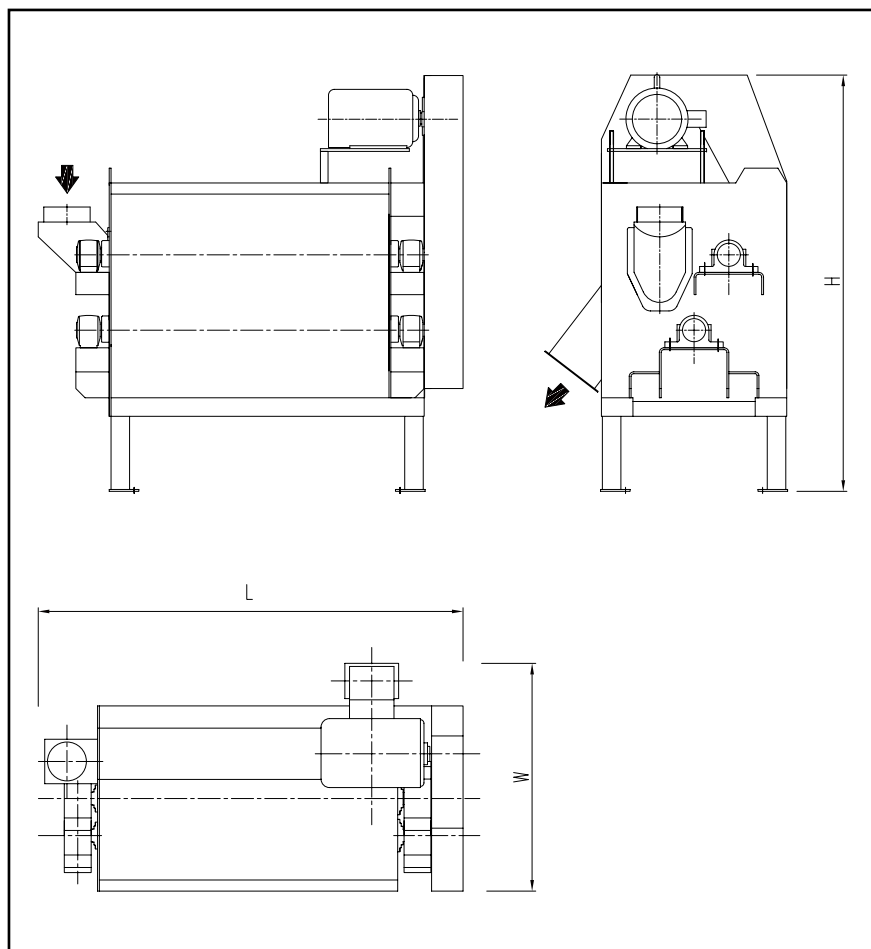
DAMPENER

This DAMPENER is a twin-rotor mixer designed for wheat conditioning and tempering. Its primary function is to add water to wheat grains, facilitating the tempering process—a critical step in flour milling that helps reduce ash content and enhance flour whiteness. The SZS dampener ensures uniform moisture distribution, contributing to improved milling performance and product quality.



info@g-grain.com

More details please visit www.g-grain.com and download



Model	Capacity (t/h)	Power (kW)	Length (mm)	Capacity (%)	Dimensions (L×W×H) (mm)
SZS-30/150	≤ 18	7.5-15	1500	4	2042×850×1842
SZS-45/150	≤ 30	11-18.5	1500	4	2090×1311×2248
SZS-50/150	≤ 40	18.5-22	1500	4	2125×1475×2305