

# LGBM

## CHAIN CONVEYOR

LGBM series chain conveyor is mainly used for the horizontal transportation of granular and powder materials. It is suitable for multi-point feeding and multi-point discharging.

### Main Structure

Tail section, middle section, head c/w driving unit.

### Features

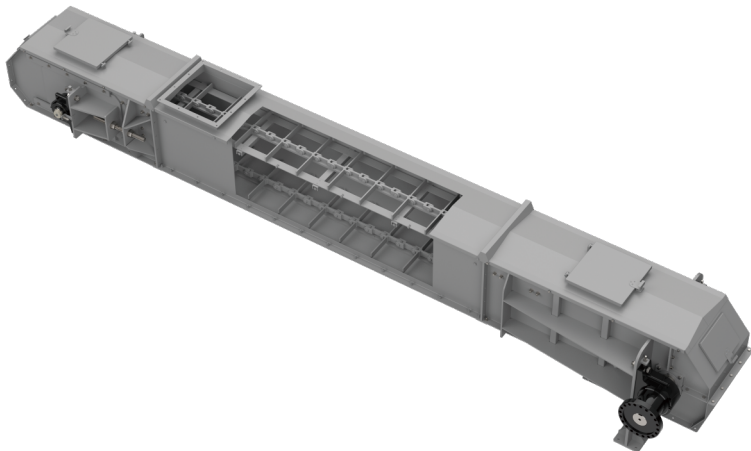
1. LGBM is made of ultra-polymer wear-resistant plates, guide rails are made of wear-resistant steel or polymer wear-resistant material, with low noise and long service life.

2. Equipped with speed protection, anti-choke, broken chain alarms etc. to ensure stable operation and avoid equipment damage.

3. The tail of the equipment is equipped with chain tensioning device for quick adjustment.

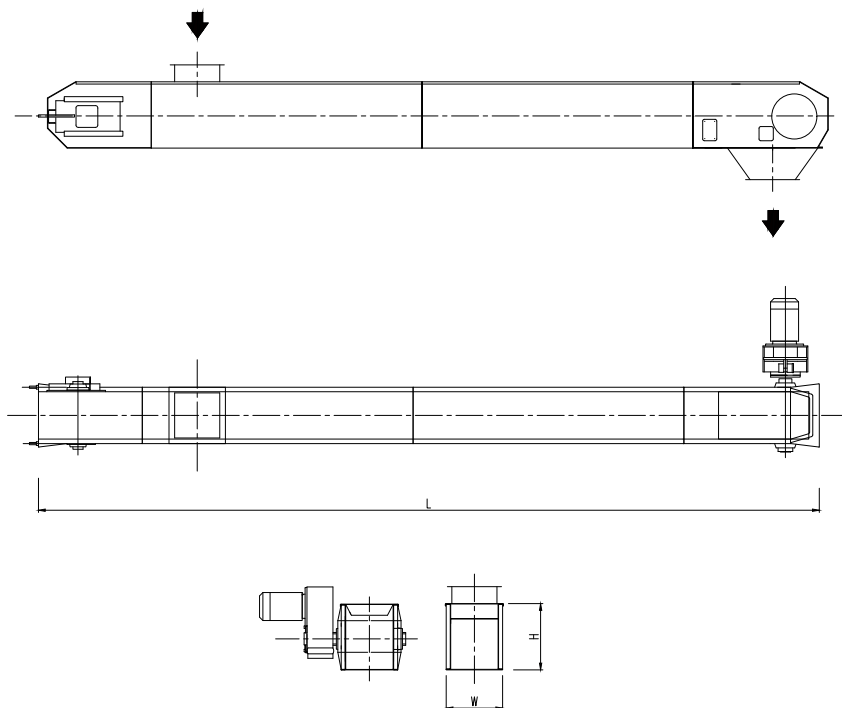
4. A variety of transmission modes are optional and select depend on the layout.

5. Chain type has longer service life since it's strong and durable.



[info@g-grain.com](mailto:info@g-grain.com)

More details please visit [www.g-grain.com](http://www.g-grain.com) and download



Model	Casing Width (mm)	Feed layer height (mm)	Speed (m/s)	Capacity (t/h)
LGBM-16	160	155	0.3~0.5	10~20
LGBM-20	200	200	0.3~0.5	20~35
LGBM-25	250	250	0.3~0.6	35~70
LGBM-32	320	320	0.3~0.7	60~120
LGBM-40	400	400	0.3~0.7	90~200
LGBM-50	500	480	0.4~0.8	200~400
LGBM-63	630	580	0.4~0.8	300~600
LGBM-80	800	680	0.4~0.8	450~900
LGBM-100	1000	680	0.4~0.8	550~1100

Capacity is based on bulk density 0.75t/m<sup>3</sup>