

FDCZ

BULK SCALE

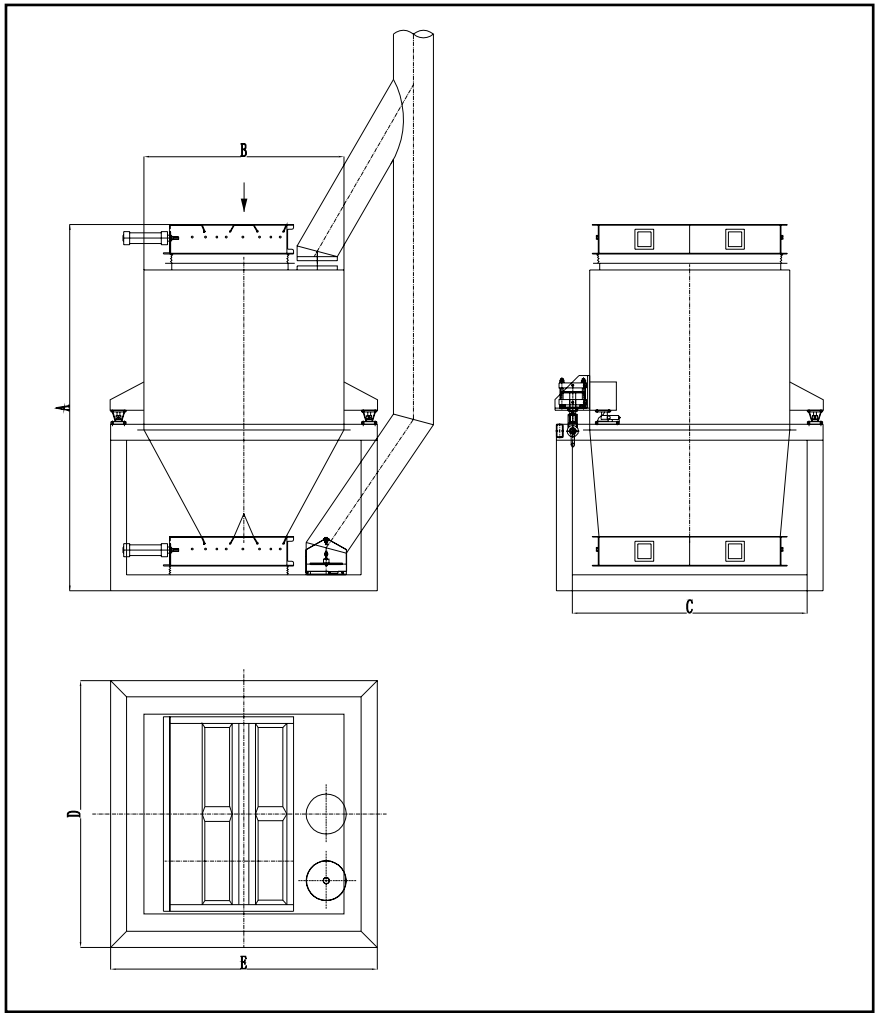
This BULK SCALE is designed for grain intake, transfer, processing, beer brewing, feed production, and other bulk material handling applications. It enables accurate aggregate measurement during receiving, delivery, and intermediate stages for granular and powder materials with good fluidity- including wheat, rice, corn, beans, rapeseed, and malt.

Supporting continuous conveying, it achieves static measurement accuracy of Class 0.2. Engineered for high reliability, the control system incorporates components from Schneider, ABB, and Siemens, while the pneumatic system uses SMC products. A wear-resistant layer of special material ensures long-term durability and stable performance.



info@g-grain.com

More details please visit www.g-grain.com and download



Model	Capacity (t/h)	Accuracy (%)	Air Pressure (MPa)	Air Consumption (m ³ /min)	A (mm)	B (mm)	C (mm)	D (mm)	E (mm)
FDCZ-100	100	±0.2	0.5-0.6	0.5	2280	2100	1500	1130	1075
FDCZ-150	150	±0.2	0.5-0.6	0.5	2580	2400	1500	1130	1075
FDCZ-200	200	±0.2	0.5-0.6	0.5	2470	2250	1910	1500	1265
FDCZ-250	250	±0.2	0.5-0.6	0.5	2670	2450	1910	1500	1265
FDCZ-300	300	±0.2	0.5-0.6	0.5	2747	2457	1760	1500	1250
FDCZ-400	400	±0.2	0.5-0.6	0.65	3047	2757	1760	1500	1250
FDCZ-600	600	±0.2	0.5-0.6	0.65	3047	2757	1720	1500	1250
FDCZ-800	800	±0.2	0.5-0.6	1	3244	2954	2520	2000	1320

Note: Capacity is tested with wheat; for other materials, capacity should be calculated based on bulk density. The upper buffer hopper and lower buffer hopper are optional.