

# PTS

## BUCKET ELEVATOR

PTS elevator is used for granular and powdery materials for vertical conveying.

### Main structure

Boot, middle section, head c/w driving unit.

### Features

1. Equipped with speed protection, anti-deviation, back stop etc. to ensure stable operation and protection. Large capacity elevator is equipped with auxiliary drive device, for inch (small) movement during maintenance.

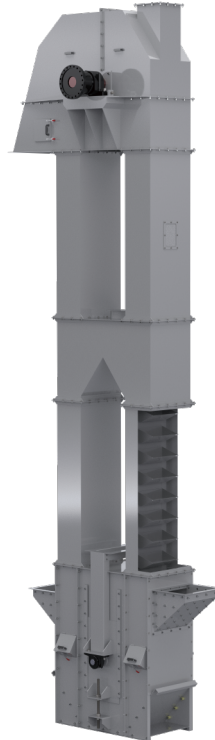
2. Tensioning device adopts gravity or screw tensioning.

3. Head pulley is covered with wear-resistant non-slip rubber to prevent wear and belt slippage.

4. Equipped with observation windows.

5. Supplied with nylon or polymer plastic buckets, high strength, wear-resistant.

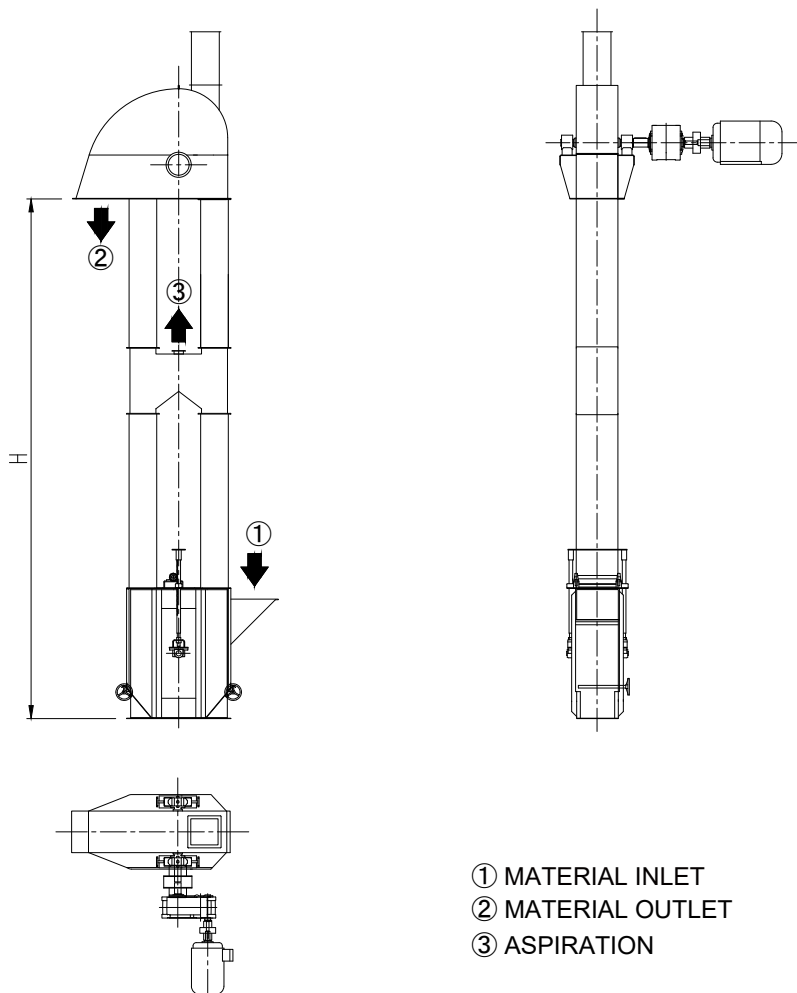
6. Rubber belt or PVC belt, low elongation, durable and reliable for long service life.



GOLDEN GRAIN

[info@g-grain.com](mailto:info@g-grain.com)

More details please visit [www.g-grain.com](http://www.g-grain.com) and download



Model	Head pulley dia. (mm)	Belt speed (m/s)	Capacity (t/h)	Max height (m)
PTS-50/28	500	2.0~2.8	50~80	45
PTS-60/33	600	2.5~3.3	100~150	50
PTS-80/46	800	2.5~3.3	200~250	60
PTS-80/56	800	2.5~3.3	250~350	60
PTS-100/33X2	1000	2.5~3.5	350~550	60
PTS-100/46X2	1000	2.5~3.5	450~650	60
PTS-100/56X2	1000	2.5~3.5	600~800	60
PTS-120/56X3	1200	2.5~3.5	900~1200	60

Capacity is calculated based on bulk density 0.75t/m<sup>3</sup>