

# FLQX/C

## AIR COOLER

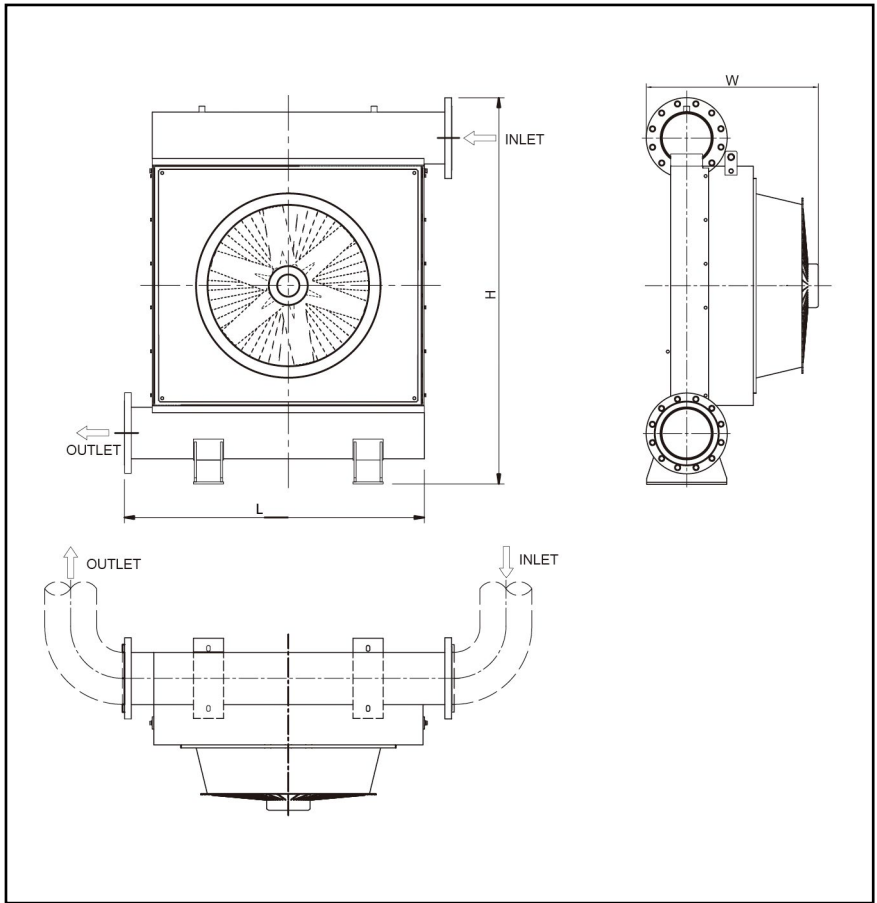
This AIR COOLER is typically used in positive-pressure conveying systems and is connected to the outlet of a Roots blower. High-temperature compressed air enters the cooler through a blowing pipe and is distributed via a horizontal manifold to multiple cooling channels. These channels transfer heat to aluminum alloy fins with excellent thermal conductivity, forming a panel-type radiator.

An axial fan generates airflow that passes vertically through the radiator, carrying away heat and exhausting it to the outside. This process reduces the air temperature to a suitable level—typically about 10° C above ambient—ensuring efficient and safe operation.



[info@g-grain.com](mailto:info@g-grain.com)

More details please visit [www.g-grain.com](http://www.g-grain.com) and download



Model	Fan Power (kW)	Pressure Loss	Pressure (MPa)
FLQX/C-15	0.25	$\leq 0.03\text{Bar}$	0.3
		100Pa	
FLQX/C-30	0.55	$\leq 0.04\text{Bar}$	0.3
		100Pa	
FLQX/C-40	0.55	$\leq 0.05\text{Bar}$	0.3
		125Pa	
FLQX/C-55	1.5	$\leq 0.05\text{Bar}$	0.3
		140Pa	
FLQX/C-65	3	$\leq 0.05\text{Bar}$	0.3
		180Pa	