

# CFMC

## INSERT FILTER

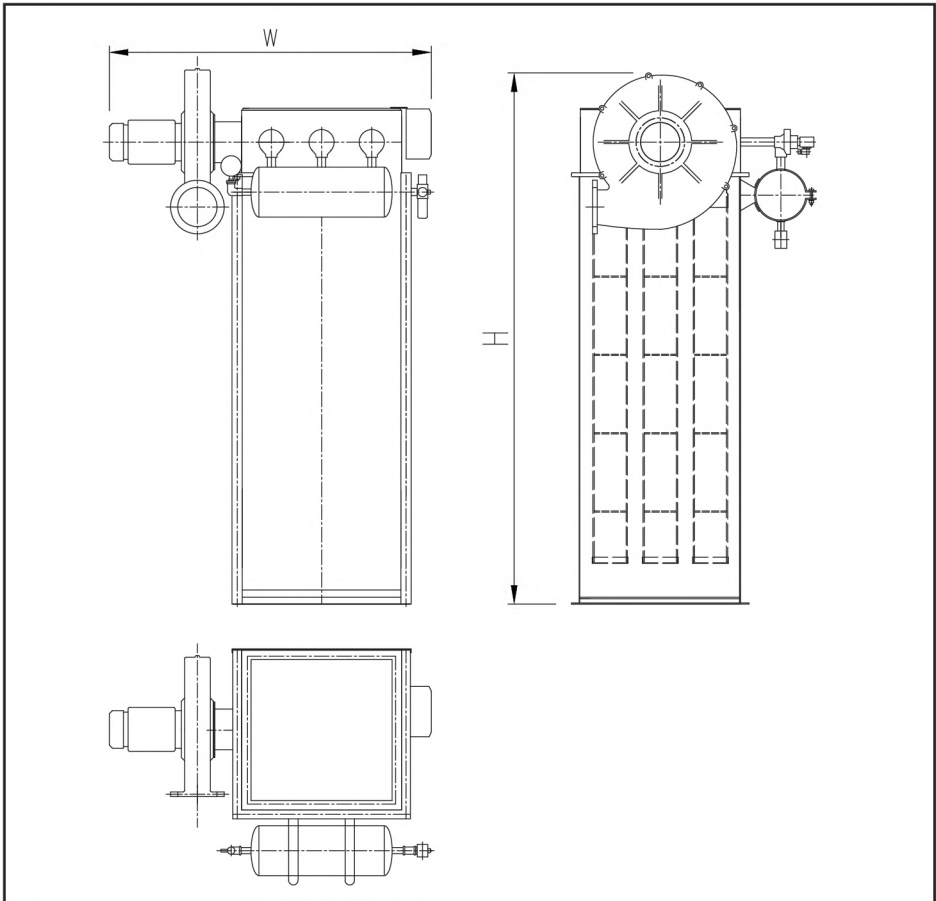
CFMC series insert filter is the latest small bag filter designed by our company by absorbing the technology of domestic and international products. The series dust collector adopts the ash cleaning by pulse jetting, which has the characteristics of good ash cleaning effect, high dust removal efficiency, high capacity air volume process, long lifetime of sleeve, low maintenance, safe and reliable operation, and so on. The equipment can be widely used in gas and dust separation of dust-containing gas below 80 °C. Because the gas source of pulse ash cleaning is the air dust which is oil-free, water-free and pollution-free, it is especially suitable for food, grain, medicine, hygiene and other industries. It can also be used in metallurgy, chemical industry, cement, mining, foundry and other industries



GOLDEN GRAIN

[info@g-grain.com](mailto:info@g-grain.com)

More details please visit [www.g-grain.com](http://www.g-grain.com) and download



Model	Sleeve length (mm)	Handling Air Volume (m <sup>3</sup> /h)	Filter area (m <sup>2</sup> )	Equipment resistance (pa)	Dedusting efficiency	Fan		
						Model	Air volume (m <sup>3</sup> /h)	Power (kw)
CFMC-6	1000	132-396	2.2	≤800	≥99.5%	TKV-010	480	0.75
	1200	162-486	2.7			TKV-012 (Standard type)	1100	1.5
CFMC-9	1000	204-816	3.4			TKV-012 (Enlarged type)	1500	1.5
	1200	246-984	4.1			VDFJ-3.2A	3000	2.2
CFMC-12	1000	270-1350	4.5			VDFJ-3.6A	4200	3
	1200	324-1458	5.4			VDFJ-3.6A	4200	3
CFMC-16	1200	408-2040	7.2					
	1500	510-2550	9.0					
CFMC-24	1200	648-3240	10.8					
	1500	810-4050	13.5					
CFMC-26	1200	708-3540	11.8					
	1500	882-4410	14.7					

1. Filtration air speed : 1-5m/min.
2. Air leakage rate:≤5%.